



33' Avanti Center Console cuddy

- Year: 2008
- **Current Price:**
US\$ 83,000 (02/11)
- Located in North Miami, FL
- Hull Material: Fiberglass
- Engine/Fuel Type: Twin Gas
- YW# 68151-2127210

LOCATION IS NOW NORTH MIAMI FLA.ENGINE WARRANTIES TO June 2013 Custom built, sharp looking 100% hand laid fiberglass with a one piece inner liner for a no flex,no rattle ride.Everything is heavy duty and thru bolted from the oversized pop up cleats to the transom mounted engine bracket.Powered by 4 stroke Mercury Verado 300's with warrantees thru June 2013,this boat will turn heads at 35kt cruise speeds and at 50kt wide open throttle.This boat is the quintessential multi purpose platform in that it will cruise , fish any tournament,waterski & tube, island hop, dive and just about anything else you need it to do in style and comfort.Come see this boat, there are no disappointments.

Additional Specs, Equipment and Information:

Builder/Designer

Builder: Avanti

Dimensions

LOA: 33 feet

Beam: 9.5 feet

Displacement: 6800 pound

Bridge Clearance: 8.83 feet

Engines

Engine Brand: Mercury

Engine(s) Total Power: 600
HP

Engine Model: 4 stroke
Verados

Engine Hours: 190

Cruising Speed: 40 mph

Maximum Speed: 63 mph

Engines

Total Power:
300

Tanks

Fuel: 250

>Fresh Water: 30

This boat has

HULL, DECK and COCKPIT:

- 100% handlaid fiberglass construction
- One piece solid fiberglass liner
- 100% stainless steel hinges thru bolted
- Huge oversized pop up stainless cleats
- Powder coated aluminum split handrail
- Forward anchor locker
- Self bailing cockpit
- Powder coated aluminum forward swept radar arch
- Stainless steel bow eyes and transom
- Built in forward console seating--raises to provide access to under console
- 3 Marine batteries
- 2 Guest switches
- Huge forward cuddy
- Cuddy cushions
- Courtesy lighting in cuddy
- Heavy duty 2 piece rub rails
- port and stbd storage/fishwells
- 2 Bilge pumps forward and aft
- Freshwater washdown pump
- Saltwater washdown pump
- Removable aft seating
- Swim platform
- Stainless boarding ladder
- Custom helm bolster seating
- Hydraulic steering
- Bennett trim tabs

Electronics Include

- Clarion sound system ipod ready/CMD5
- 6 disc auto change
- Icom IC-M304 VHF radio
- Garmin 3210 Radar, chartplotter
- High performance compass
- Mercury Smartcraft instrumentation

Owners opinion

- Great looking boat, custom blue silver graphics
- Fast, soft riding
- Fuel efficient at cruise speeds
- Easy to clean and maintain

- Spacious and comfortable-lots of room
- Easy access to all mechanical systems
- No rattling at any speed/seas
- Warranted thru 2011

Additional

- 30 gallon livewell
- Livorsi controls and steering
- Stainless props--perfect
- Custom cockpit canvas Blue in perfect shape

Disclaimer

The Company offers the details of this vessel in good faith but cannot guarantee or warrant the accuracy of this information nor warrant the condition of the vessel. A buyer should instruct his agents, or his surveyors, to investigate such details as the buyer desires validated. This vessel is offered subject to prior sale, price change, or withdrawal without notice.

Last Revised: Feb 23, 2011



> Photo 2



> Photo 3



> Photo 4



> Photo 5



> Photo 6



> Photo 7



> Photo 8



> Photo 9



> Photo 10



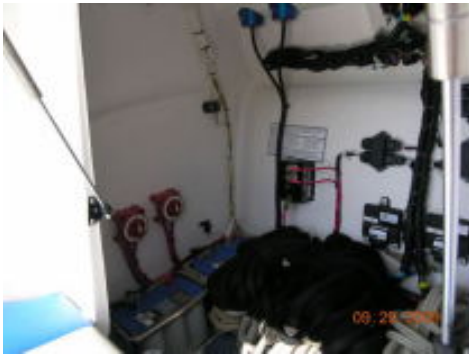
> Photo 11



> Photo 12



> Photo 13



> Photo 14



> Photo 15



> Photo 16



> Photo 17



> Photo 18



> Photo 19